

## about **Velman**

- With over 22 years of expertise in CNC wood working, Velman has consistently delivered exceptional craftsmanship.
- Our state-of-the-art facilities allow us to produce over 2,500 sq. ft. of precise 2D cuts or 250 sq. ft. of 3D carving per day.
- CNC Router with bed size of up to 3000mm (L) x 1500 (W) x 200mm (H), CNC Turn Mill Centre with size up to 300mm dia, 2700mm (L), Plastic and Wood Laser Cutting / Engraving Machine with bed size 2400mm (L) x 1200 (W).



# **Velman**<sup>®</sup>

35-1, RAJESHWARI NAGAR Phone : +91 98432 92550  
NEAR HINDUSTAN COLLEGE +91 98431 42824  
COIMBATORE 641 028 E-mail : [carving@velman.com](mailto:carving@velman.com)  
TAMILNADU, INDIA Web : [www.velman.com](http://www.velman.com)

## PRODUCTS

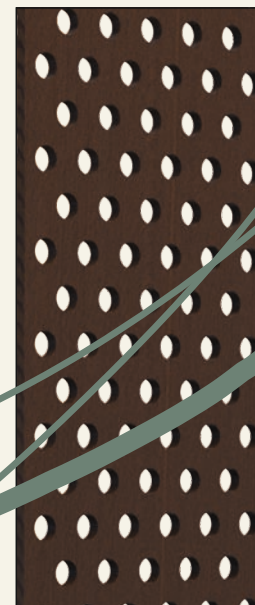
- Plywood Cutting
- Plastic
- Nylon
- Laser Marking
- Custom Foam Insert
- Painting & Marking Stencil
- Rapid Prototyping
- FRP Mould
- Casting Pattern
- Metal Logo
- Gaskets
- Acoustic Foam
- Wire Spool
- Hylam Fixture
- Modular Storage Solution
- MDF Transport Fixture
- Precision Tools Storage Box



CONTACT



LOCATION



# **Velman**<sup>®</sup>

## Industrial Products

Plywood

Plastics

MDF

Hylam

Engineering  
**EXCELLENCE**

[www.velman.com](http://www.velman.com)



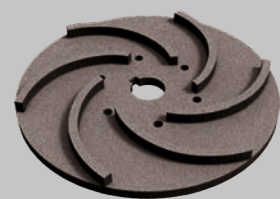
# Velman®

State-of-the-art equipment

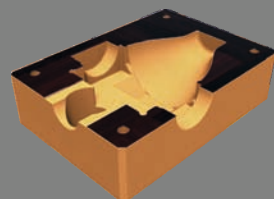
Skilled engineering team

Fast turnaround times

Customization at scale



PLASTIC



HYLAM



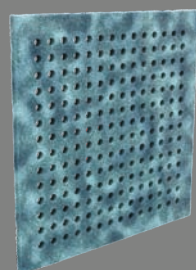
NYLON



TRANSPORTER



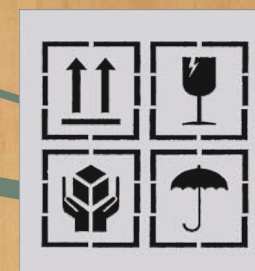
TOOL HOLDERS



ACOUSTIC FOAM



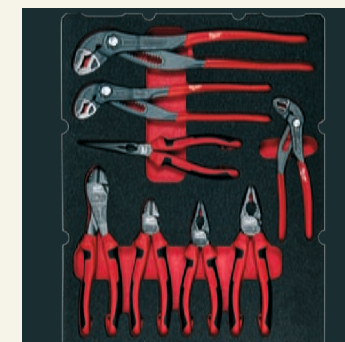
FRP MOULDS



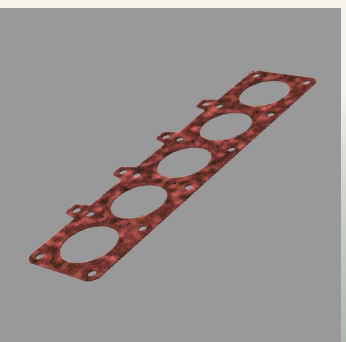
STENCIL



MDF FORMER



FOAM INSERTS



GASKET

**Engineered Wood Products:** From durable Plywood for structural applications to versatile MDF for intricate designs, we provide high-quality wood-based materials.

**Specialized Fixtures:** We design and manufacture robust Transport Fixtures to ensure the safe and efficient movement of your products. Our expertise extends to high-precision Hylam Fixtures and adaptable MDF Fixtures for various industrial processes.

**Advanced Moulding & Prototyping:** Experience the power of rapid iteration with our Rapid Prototyping services. We also specialize in crafting high-quality FRP Moulds for consistent and accurate production.

**Precision Tooling Solutions:** Organize and protect your valuable tools with our custom Precision Tool Holder Boxes and precisely cut Tool Box Foam inserts.

**Sealing & Insulation:** We provide reliable Gaskets for effective sealing solutions and Acoustic Foam to manage sound and vibration.

**Identification & Branding:** Enhance your products with professional Laser Marking for permanent identification and durable Name Plates for clear branding.

**Custom Components:** We manufacture a range of specialized components, including durable Wire Spools for efficient wire management, accurate Casting Patterns for metal forming, and wear-resistant Nylon Cams for mechanical applications.

**Precision Cutting Services:** Our advanced Stencil Cutting capabilities deliver accurate stencils for various industrial and artistic applications.

Rapid Prototyping